

TLAS

How to describe the system?

Work session EFI-TEFSO

Bangkok, 18/10/2017



TLAS description

- Coverage
- Elements
- How was the TLAS developed?
- Definition
 - of Legal timber
 - of terms
- Functioning
- Additional elements

TLAS coverage

- TLAS coverage
 - Products
 - Sources
 - National
 - Imports
 - Destination

TLAS coverage

- TLAS coverage
 - Products – reference to the annex
 - Sources – All sources
 - still to be clarified in LD?*
 - Destination – Exports, domestic market

TLAS elements

- Recap of TLAS elements
 - Legality definition – LD matrix ready
 - CoC controls – Almost ready
 - Verification – in the LD, verification of CoC
 - Independent Audit – separate annex
 - Licensing scheme – describe in TLAS annex

TLAS elements

- Recap of TLAS elements
 - Legality definition
 - Supply chain controls
 - Verification of both
 - Independent Audit
 - Licensing scheme

TLAS elements

- Recap of TLAS elements
 - Legality definition – LD matrix ready
 - CoC controls – Almost ready
 - Verification – in the LD
 - Independent Audit
 - Licensing scheme

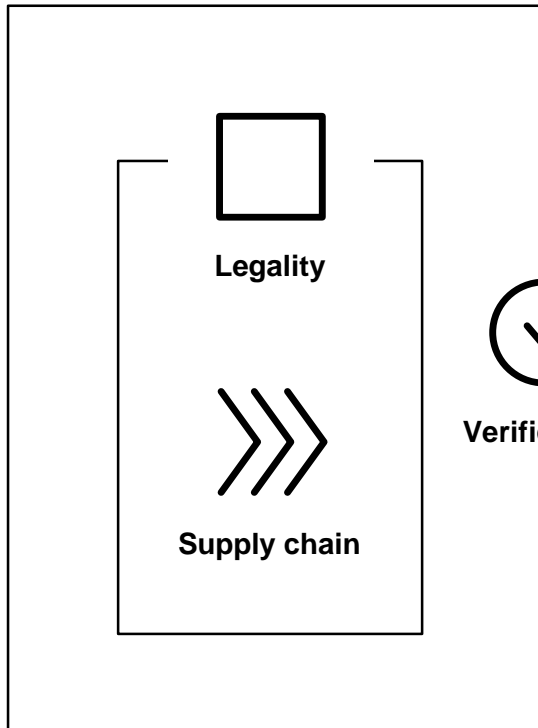
TLAS functioning

- How do the element work together
 - Chart?
- Institutional structure in place
 - Chart?
- What informs licensing?

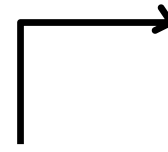
TLAS chart



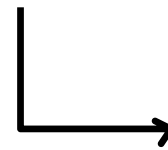
Independent
audit



Verification

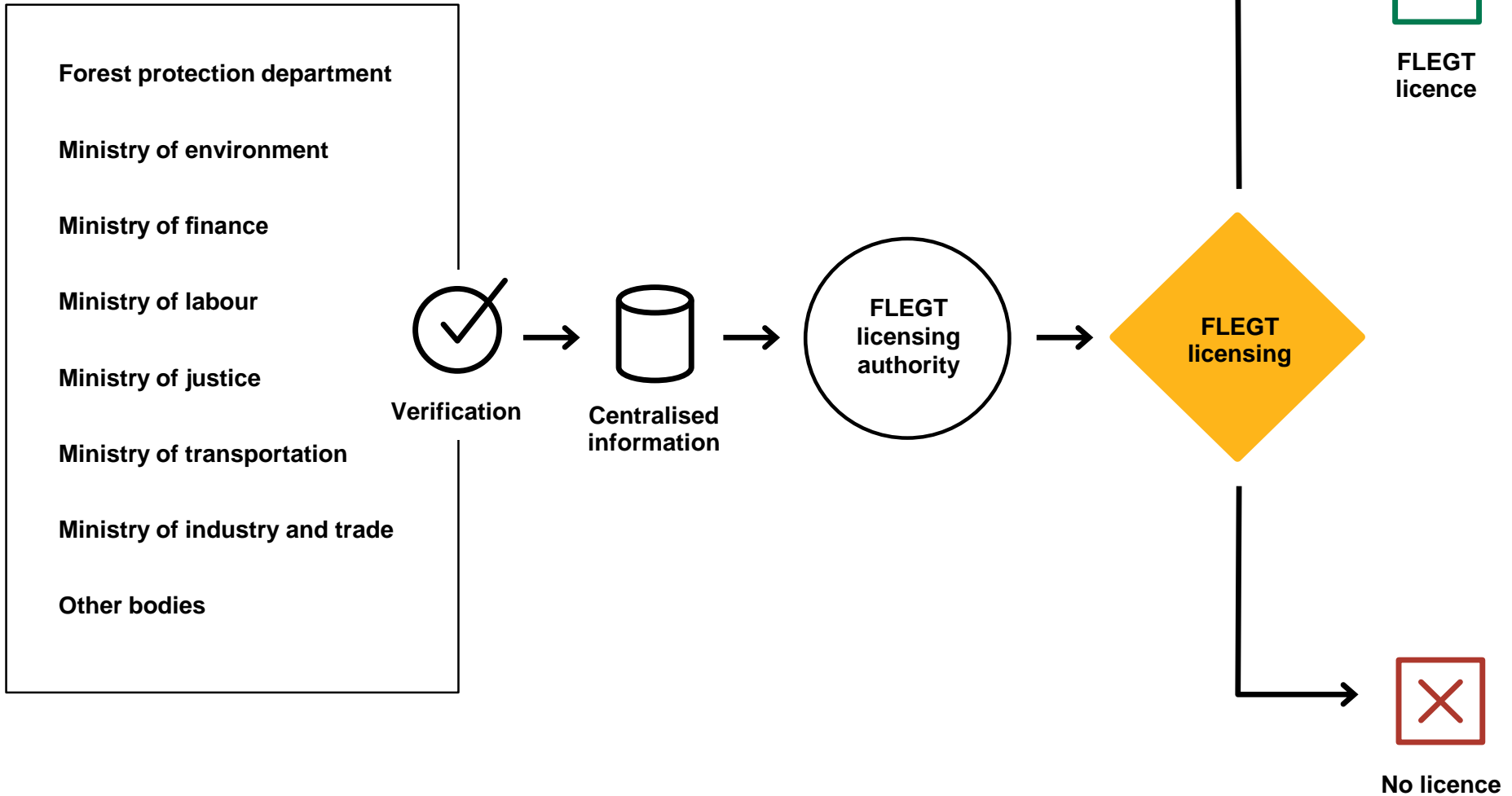


FLEGT
licence



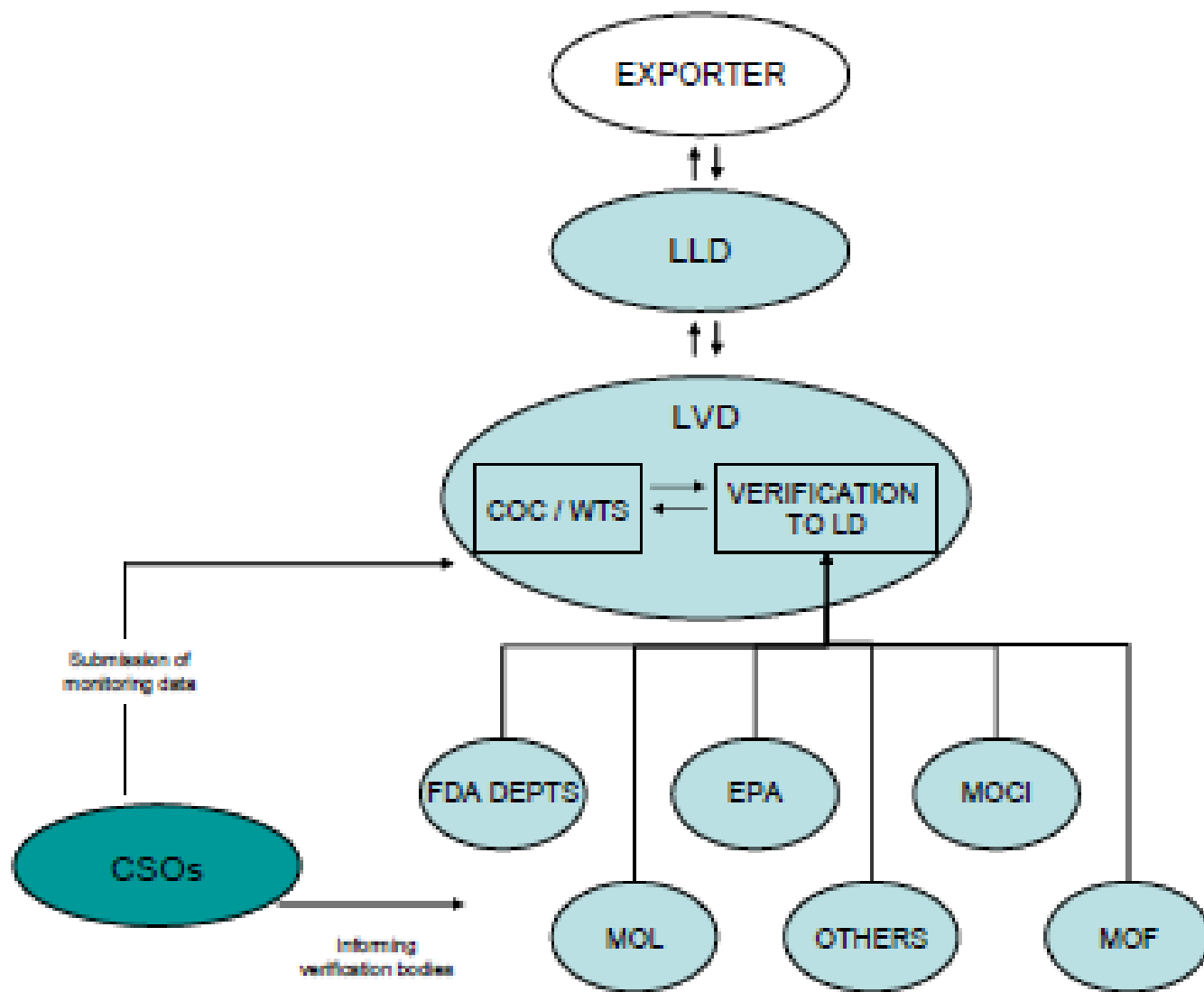
No licence

TLAS chart



TLAS functioning

- How do the element work together
 - Description
 - Chart?
- Institutional structure in place
 - Chart?
- What inform licensing?



Verification of CoC

- For each control point
 - Who declares what information?
 - Who verifies?
 - What is verified?
 - How it is verified?
 - Means (Field/office, All/sampling)
 - Methodology/process
 - Frequency
 - How information is managed

Verification of CoC

- One system/several?
 - What are the minimum requirements
 - How is risk considered?
 - How to adapt to size/capacity/risk

Licensing scheme

- How is information gathered and assessed?
- Who issue licenses?
 - Licenses authority?
 - What structure is needed?
 - Electronic?
- Annex on licensing (standard)
 - license template
 - Requirements for issuance of licenses

Additional elements

- Non-compliance management
- Confiscated timber
- Handling sanctions
- Complaint mechanism, appeal
 - Role of Civil society in oversight of TLAS
- Continuous improvements
- Transit

EU**FLEGT**

Facility

